

Portable Oxygen Analyzer TB-SI-M



What's TB-SI-M

Detective element is made of Zirconia electrolyte.

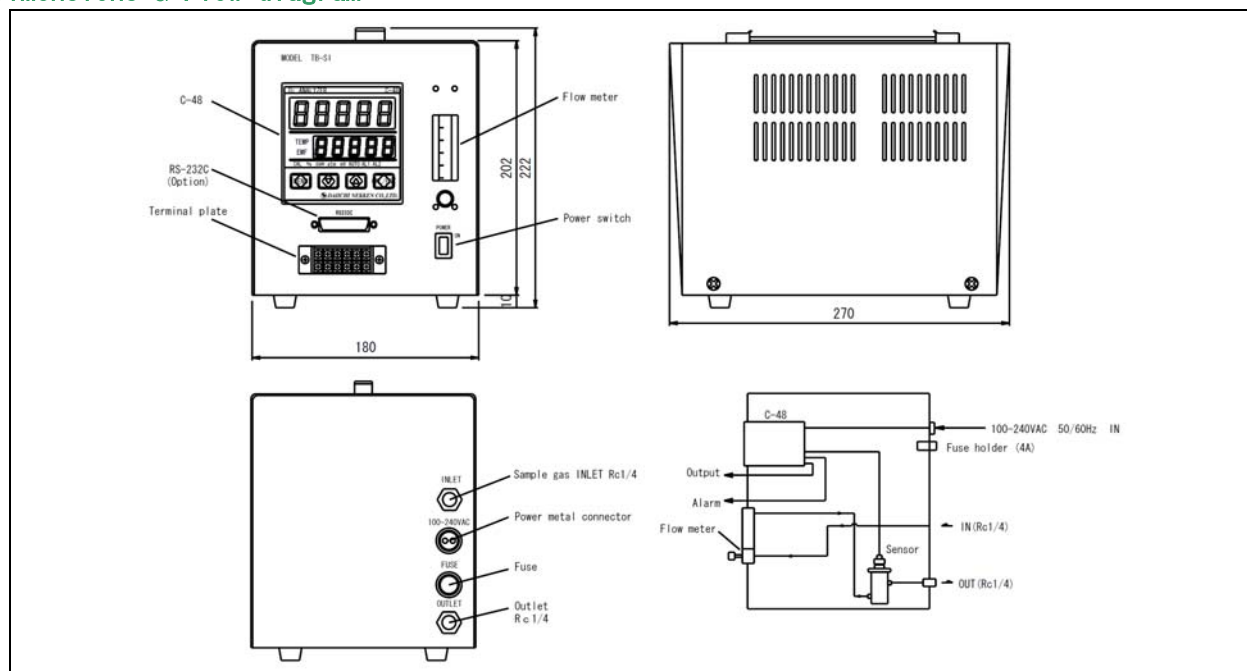
TB-IIF-P sensor and C-48 control unit are installed altogether in a box for portable uses.

This analyzer can be used for every application where range of 0.1ppm to 100% or atm unit.

Feature

- ◎ Wide range application, from 0.1ppm to 100%O₂ or atm.
- ◎ Possible to select Output scale range freely.
- ◎ Serial communication function is also equipped optionally.
- ◎ 100V~240VAC power supply can be applied.

Dimensions & Flow diagram



Specifications

Principle	Zirconia electro-chemical cell
Structure	SS box, TB-II P sensor, C-48 control unit, flow meter with needle valve
Display	R1~R3 (Every unit can be set on each range.) % : 0.00-100.00 ppm : 0.0-9999.9 atm : -35.00-0.00 mV : -40.0-1500.0
Output	4~20mADC/0-1VDC or 0-5VDC or 0-10VDC (Select one of them) RS-232C(Optional)
Range change	Auto/Manual/Remote(Optional)
Initial setting	0~25%O ₂ /0~9999ppmO ₂ /-35.00-0.00atmO ₂
Alarm	Hi/Lo, Hi/H・Hi、Lo/L・Lo (Contact A) Failure : Disconnection of Heater, RTD (Contact A)
Linearity	The Larger either of less than $\pm 1\%FS$ or $\pm 1ppm$
Repeatability	The Larger either of less than $\pm 1\%FS$ or $\pm 1ppm$
Response	90% reading 10sec. (Swinging to a high density side)
Drift	Less than $\pm 2\%FS/wk$
Piping	Rc1/4
Sampling	Supply by positive pressure of sample gas
Sample Flow Rate	0.2~2L/min
Sample gas Temp.	100°C
Warm up time	About 20min.
AC Power	100~240VAC
Accessory	Power supply code

※For the improvement, the specification and design may be changed without prior notice.

Inquiry

Daiichi Nekken CO.,LTD

13-22 Nishikura-Cyo Ashiya-City

Hyogo-Prefecture Japan

TEL 0797-31-2410 / FAX 0797-31-8951

URL <http://www.daiichinekken.co.jp>

E-mail info@daiichinekken.co.jp